



# How The Orders of St. John Care Trust Ensures Residents, Staff, and Visitors Are Safe



**T**he care home environment has always had its challenges, especially when it comes to keeping residents healthy. Residents are often elderly, immunocompromised or have co-morbidities which can make staying healthy even more difficult. With the impact of COVID-19, this has become an even greater challenge and has forced many care environments to not only tightly regulate or restrict visitors but to also implement more stringent cleaning and hygiene practices.

This is true of The Orders of St. John Care Trust (OSJCT), a not-for-profit care provider, based in the United Kingdom. The Trust provides reputable trusted care, support and housing to residents and tenants in 68 homes and 14 extra care schemes across Gloucestershire, Lincolnshire, Oxfordshire, Suffolk, West Sussex and Wiltshire. Their offering to the elderly includes specialised dementia, intermediate, respite, day care and expert nursing with over 4,800 staff to assist more than 3,500 residents.

At the heart of their mission is the ultimate goal to deliver care to the highest standards possible. That is why they have been accredited by the National Care Forum, through its “Quality First” framework, and rank in the Top 20 recommended care group homes for 2020.

At the centre of their success is their commitment to cleanliness, requiring thorough testing of all homes to meet stringent requirements for sanitising all areas and wearing the correct PPE at all times.

---

**The Orders of St. John Care Trust ranks in the Top 20 recommended care group homes for 2020.**

---

To ensure that the level of cleaning meets their high standards, OSJCT has recently implemented a new protocol which involves cleaning and disinfection and testing of multiple surfaces for the presence of ATP, the energy-releasing molecule found in every living cell. Measuring ATP has been adopted in many industries for determining how clean a surface is. OSJCT takes this process seriously and has recently adopted EnSURE™ Touch for measuring ATP levels across all its care homes. They require staff to test not only door handles, handrails, kitchen handles and work surfaces, but also showers, sinks, office telephones and high footfall locations such as main entrance areas (visitor areas).

In addition, they have provided training to key staff at all locations on correct cleaning and testing procedures in order to ensure accurate measurements are obtained, using the results to provide a clear indication of the high levels of hygiene the Trust demands. Each home has its own Ensure Touch device for measuring ATP after cleaning. As an added bonus, data from each device is sent to and stored in a single location within the SureTrend™ Cloud software, so a single report from the cloud-based application can quickly identify 'problem/ challenging' sites/areas which can then be immediately addressed by staff at that specific home.

"Having one system for measuring cleaning effectiveness at all 68 of our homes is essential to ensuring the safety of our residents and staff. We feel confident that implementing this process will allow us to begin lifting restrictions on visitors, improving the quality of life for our residents and providing the reassurance needed for our staff to feel comfortable working in the homes."

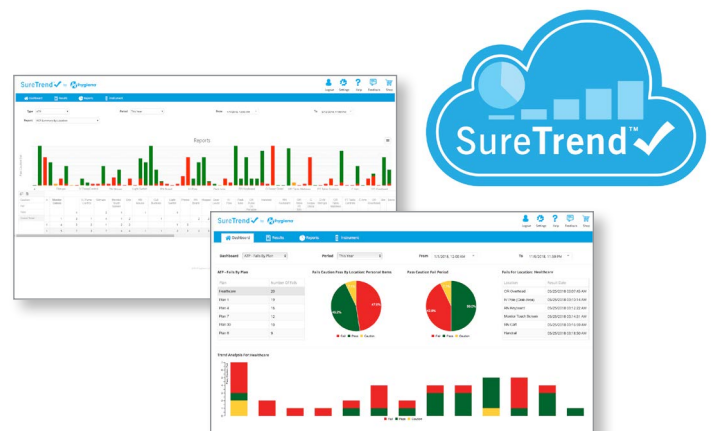
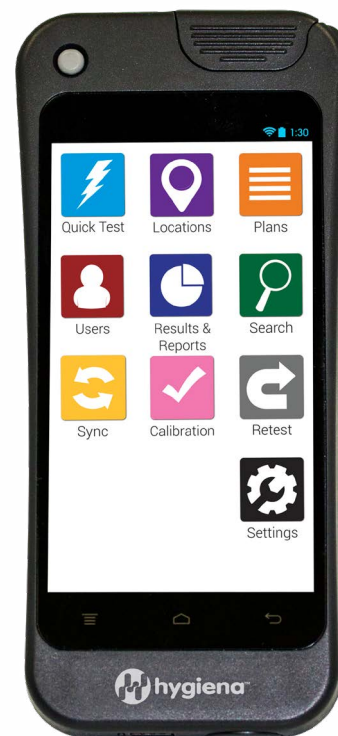
"We are one big family and want to ensure everyone feels safe. Stress is already high and anything we can do to reduce anxiety and concern for residents whilst helping families enjoy time together makes all the difference."

"EnSURE Touch, combined with SureTrend Cloud, gives us confidence and peace of mind that our cleaning practices are working effectively, we have a single place where data can be stored and analysed, and will use the acquired data to develop targeted action plans to tackle those environments which are giving us cause for concern, ensuring the health and wellbeing of our residents is always paramount."

Learn more about ATP cleaning verification using EnSURE Touch and SureTrend Cloud [here](#).

LEG-CS-0001-REVA\_ST. JOHN-ATP

**"EnSURE Touch, combined with SureTrend Cloud, gives us confidence and peace of mind that our cleaning practices are working effectively."**



Distributed by